

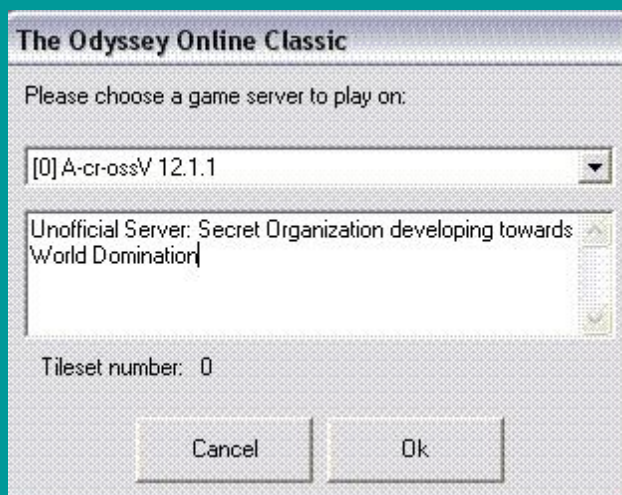
The Teach You How to Not Suck Page!

How to Play

Not that difficult actually, unless you encounter problems. Just go to the 'Need Help?' section if you find something's amiss, or go to Contact Us and e-mail someone if you still can't figure anything out.

Getting In The Game

First thing to do is to double click Odyssey.exe. When it says "Continue to Play" Click the "Continue >>" Button, then select a Server from the drop down, and click 'Ok'



If there were no servers; in other words you got this:



Or, there was an error connecting message/no internet connection, then you cannot connect to someone else's server *For Now*

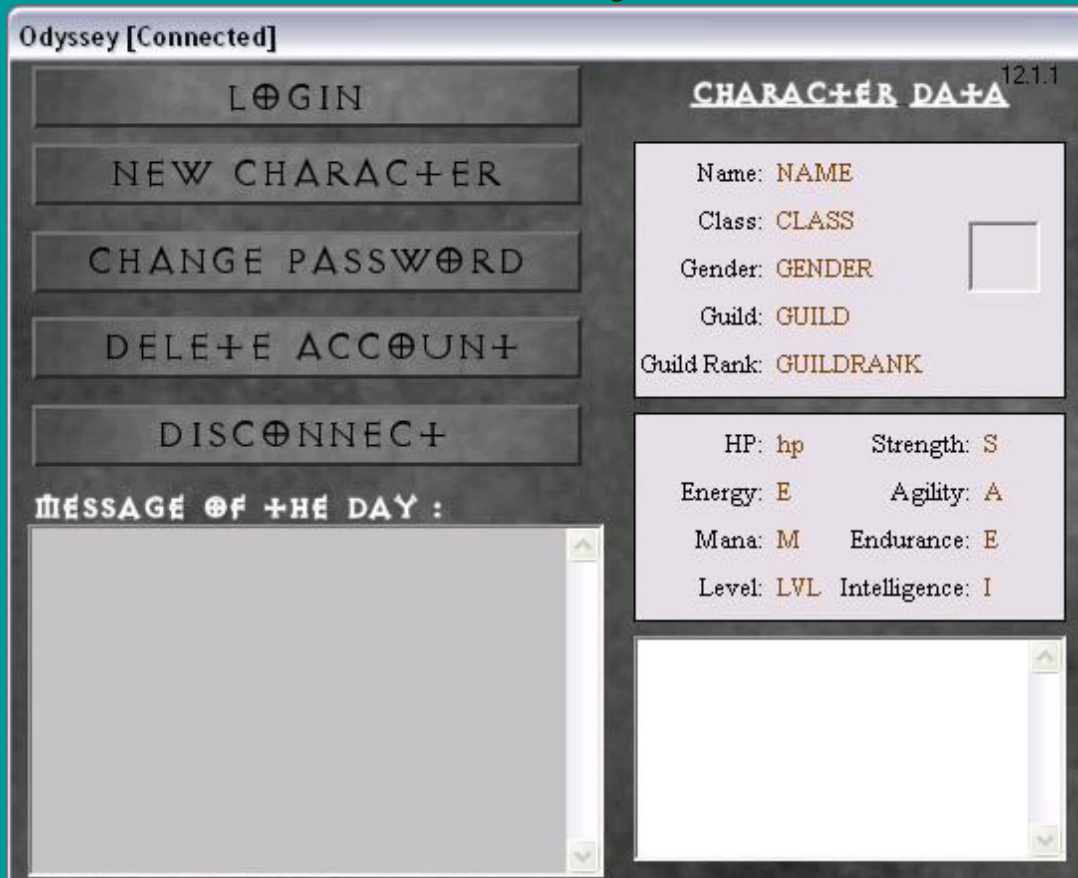
If the problem persists, e-mail Pengwy or me to ask about it. Until then, if you still want to get in the game, double click Server.Exe, and set that up, according to the Getting Started Instructions. When finished, Use the OdysseyConnector.Exe and put in for IP "127.0.0.1" then hit Connect.

Now, whether you are on someone else's server, or your own, click **New Account**.



Put in an Account name and a password, retype your password and create your account. Then, wait about 5 seconds, go to Login. Login with the Account Name and Password you just created. If you don't wait, the server will think you are still

connected from when you created the account, and it will just boot you off for a second. Now that you have logged in, you should see something like this.



Go to New Character. Select a Class, and a name containing 3 or more letters. You can insert a description if you like. Descriptions are text that appears when some one clicks on you-- this is changeable after you create your character with /d in the game, so don't worry too much about it. You have a few minutes for creating a character, or you will be booted, as to prevent people from logging on but not doing anything other than lagging the server. Once you have created a character; click Login to start playing!

Whew! Made it? Awesome! Didn't? [FAQ](#), [Getting Started](#), or [E-mail Tijer!](#)

Moving:

Use the arrow keys. Not that hard to figure out. Hold Shift to run, but running takes energy, the green bar in the upper left hand corner.

Attacking

Hold/Press the Ctrl key next to a monster.

Talking

Type- your text will appear above the map. Press enter afterwards.

Broadcasting to the world

Requires 5 mana. Type /b, or /broadcast, or hit the ' key. Continue with message.

Yelling within a few maps

Type /y, or /yell. Continue with message.

Scrolling the Chat

Click on the scroll bars OR press the Pg Up/PgDown keys.

Private Tells:

Type /t name, or /tell name. Continue with message.

Picking Up Items

Press Enter while standing over the wanted item. Make sure your inventory isn't full.

Auto Pick-Up Items

Hold Shift & Press Enter while standing over several items. You will pick up all items you are on at once. Make sure your

inventory isn't full.

Dropping Items

Right click the item you want to drop. After an Item is dropped, if it is not placed on a keep tile, it **WILL EVENTUALLY DISAPPEAR.**

Using/Unusing Items

Double click them.

Basic Interface (Yours **WILL NOT** be the same):



Built-In Commands

Type them and press enter, *gold* = an amount of money and name = a person's name. Etc.

Banking

/deposit *gold*, /withdraw *gold*, /balance. Only available in a room with a NPC that can bank. Banks are all interconnected-- You deposit your money on a bank in Town A, it is also in the bank in Town B.

Guild Commands

/guilds, /guild help, /guild invite *name*, /guild join (requires gold normally), /guild leave, /guild pay *gold*, /guild balance, /guild chat message, /guild who, /guild party on, /guild party off

Only in Guild Halls: /guild hall info, /guild hall buy, /guild hall leave

Misc Commands

/help, /who, /stats, /trade (only in a room with a NPC that trades items), /d *new description*

If any commands or descriptions have been left out, please e-mail someone about it.

Quick Links

[Getting Started](#)

[How to Play](#)

[In-Depth General Playing](#)

[Guilds and Guild Halls](#)

[Operating The Server](#)

[Godding Tutorial](#)

[Mapping Tutorial](#)

[Scripting Tutorial](#)

[Mapping Form](#)

[Editing The Interface](#)



CREATE YOUR OWN **WEBSITE**

Click Here >